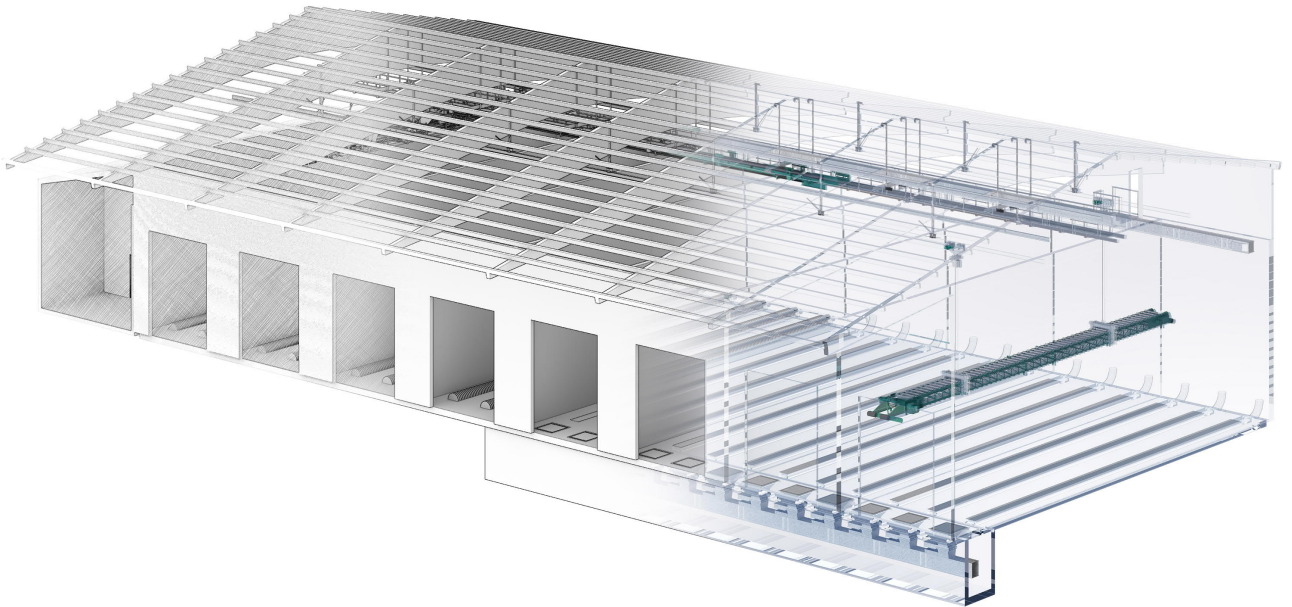
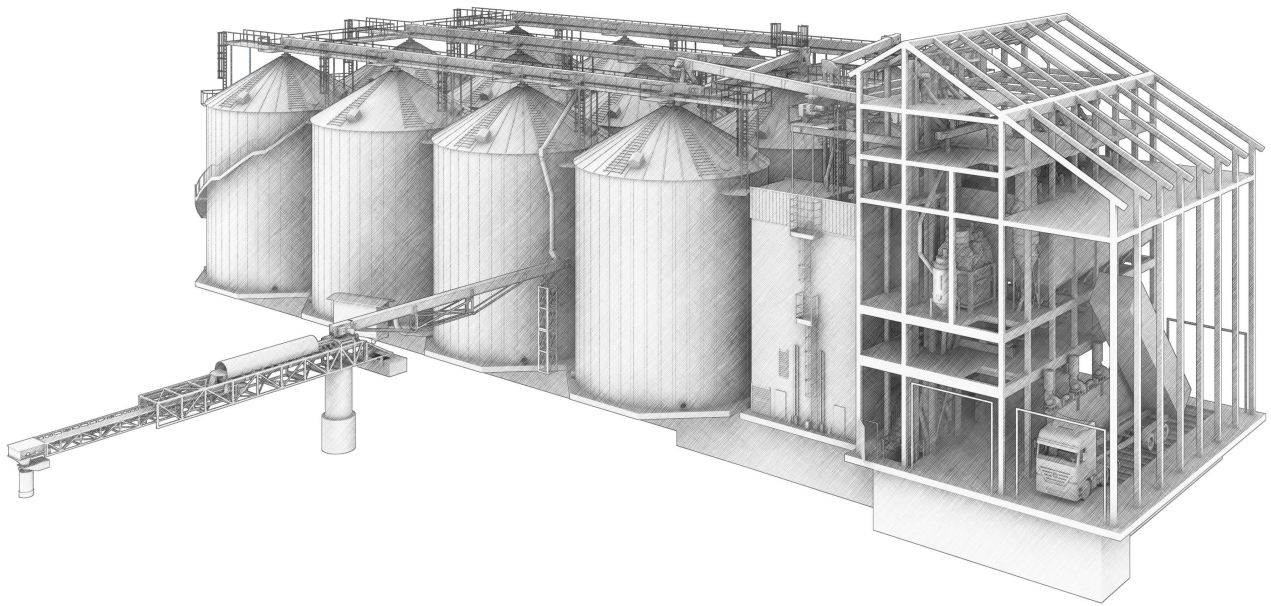


[ZUTHER-ONLINE.DE](https://www.zuther-online.de)



## ***QUALITY THAT STEMS FROM TRADITION***

Your specialist for grain management. For nearly 100 years.



## ***Tradition comes with responsibilities.***

Zuther GmbH is today counted among the leading vendors of professional bulk solids handling systems.

Much has changed since it was founded in 1921, already in its third generation: technology, manufacturing methods and much more. However, one thing has remained the same up to the present day. Our day-to-day work is still done in dialogue with our customers, based on principles such as partnership, quality, efficiency, innovation and sustainability, that same that shaped our conduct back then and will continue to do so in the future.

With these principles and technical competence, many projects have been successfully brought to a close in the past nearly 100 years. The expertise of Zuther GmbH ranges from turn-key grain storage systems to bulk solids handling in malting plant construction up to specialists in the area of non-metals quarrying and bulk materials transshipment facilities of all kinds.

In the early years, the company provided machine technology and service to a clientele primarily in the milling industry, but it has grown more and more into a production operation with its own product range. In the 1960s, Zuther was able to expand its sales market through a good product range, technical expertise and reliability, and to make a good name for itself, so that it was able to build an additional production hall in the mid-sixties. In the seventies and eighties, production was modernized by using new machines and expanding the production space, and the product range grew to include special machines and bulk solids handling for other products. Engineering was also further developed to the point that this expertise enabled it to supply turn-key silo and transshipment systems for a variety of bulk materials.

In 1988 the sons of Mr. Horst Zuther, Michael and Andreas Zuther, started working for the company. This ensured the continuation of the family enterprise and production capacity was again expanded by building another production hall with the most modern production technology, and by equipping the administration with electronic data processing, and computer-aided drafting technology, and by using CNC machines. With the new millennium came two additional production halls and, among other things, robot welding and 3-D design were introduced, so that it was possible to further optimize the technical expertise, reliability, quality and price-performance ratio, and continue to enhance competitiveness.

**Today, the activities of ZUTHER GmbH are still marked by the pioneering spirit and tradition, in combination with trend-setting technology and perfectly trained staff. We supply turn-key silo and transshipment systems for various kinds of bulk materials.**

**Zuther engineering proves its worth every day around the world under the most difficult operating conditions.**

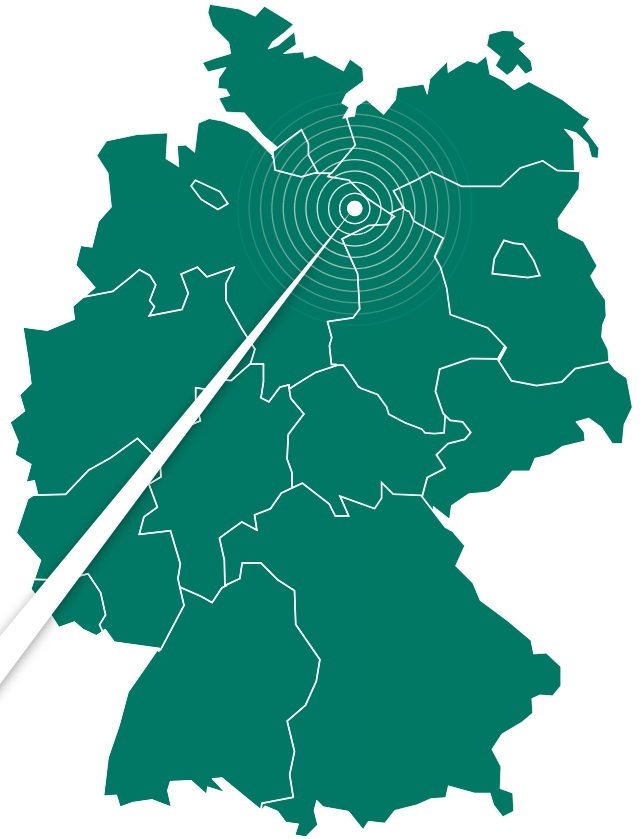


**Andreas Zuther** Management

## ***Make use of regional strengths internationally***

**In an ever more globalized economic environment, being based in Karwitz in the Lüchow-Dannenberg District offers us many advantages.**

For one thing, we are situated in the immediate vicinity of the seaports of Hamburg and Bremen, and for another, we enjoy a geographical location in the center of northern Germany within reach of the biggest areas under grain cultivation in Germany. The Lüchow-Dannenberg District, with its high quality of living and labor amidst the natural beauty of northern Germany's largest mixed woodland area and the Elbufer-Drawehn Nature Park, features businesses focusing on the rapidly growing industries of food, metal and plastic processing, renewable raw materials, and clean energy.



**ZUTHER**



*Fig.: Aerial photograph of the company grounds in Karwitz*



*»Working in a motivated team is simply fun. And customers notice this, as well.«*

Andrea Grimm, Engineering Administrative Office

## **Our employees give the company its look**



For our employees, their work is not merely a job to get done. Their career aspirations comprise giving shape to things and getting them moving. For our customers, they do not just want to find any solution, but exactly the right solution. They want to put new ideas into practice. In doing so, they act with pragmatism and knowledge, coming

up with realistic concepts, but also integrating new impulses and constantly developing themselves. And they do this together with the colleagues on their team.

For many decades, we have been training young, up-and-coming talent, also because we see ourselves as being responsible for enabling a large number of young people to start out in their careers. Many of them have now already been with the company for more than forty years.

**The core competences of our employees are technical knowledge, reliability, acting judiciously, motivation and individual initiative – all of which are the hallmarks of qualified employees.**

**We are proud to have employees such as these.**





*»You only get the best results when  
you combine the latest technologies  
and good workmanship«*



# The right solution for every requirement

## INSTALLATION ENGINEERING

- Silo systems
- Flat storage warehouses
- Grain reception systems
- Grain drying systems
- Loading plants
- Biomass plants
- Malting plant technology

## MATERIALS HANDLING TECHNOLOGY

- Belt-and-bucket elevators
- Chain bucket elevators
- Trough chain conveyors
- Conveyor belts
- Screw conveyors
- Loading
- Biomass materials handling technology
- Chain scrapers

## MEASUREMENT AND CONTROL TECHNOLOGY

- System control
- Level measurement
- Temperature monitoring
- Weighing technology

## PIPE SYSTEMS

- Round pipe systems
- Rectangular pipe systems
- Sliders
- Distributors
- Wear-resistant liners

## DUST REMOVAL TECHNOLOGY

- Filter systems
- Admission dust removal
- Point filters
- Double door systems

## LABORATORY EQUIPMENT

- Truck sampling
- Pipe sampling
- Sample cleaning
- Sample dividers

## MATERIALS PREPARATION TECHNOLOGY

- Optima
- Vortex
- Accessories

## PRESERVATION TECHNOLOGY

- Drying systems
- Refrigerating devices

## CONTRACT PRODUCTION / SERVICE

- Contract production
- Spare parts service
- Engineering



## OPTIMA

light fraction separation and size classification

- Exact sorting of mixed grain into four sizes
- Precise removal of dust and recyclable low-density particles
- Preparation of various kinds of grain without changing the screen
- Very compact, low-maintenance design
- high performance, up to 160 metric tons / hour
- Long-term optimization of operating costs









»Quality starts with a focus on customer satisfaction.«

André Wohlgemuth, Design

## We put great value on returning customers – not returned products.

At the center of our business is most importantly ensuring that our products and services are of high quality. We achieve this with our QM system, based on a large number of ongoing inspection plans which are not used at the end of a process, but rather accompany it from design to production up to assembly.

Thus we ensure that faults are identified at an early stage of the process, thereby letting us avoid expensive reworking. The way we select and constantly assess our suppliers also helps us guarantee high quality and nearly faultless production.

Kunden: \_\_\_\_\_ Auftrag-Nr: \_\_\_\_\_ Meilen: \_\_\_\_\_

AAW: \_\_\_\_\_

Einzel: \_\_\_\_\_

Kundenreferenz: \_\_\_\_\_


**ZUTHER**  
Anlagen & Service

**Prüfprotokoll Gurteleatoren Typ ELXG + ELY** **ACHTUNG: Höhenmaße vor dem Zusammenbau/Endmontage Werker**

LPZ	Anforderung	Tätigkeit/OK ablesen	ist-Maß	Soll-Maß
1	Kopf, Schachtel und Fuß ausrichten	prüfen		
	Und Flansche anschauen	messen		
2	Maße gen. umsehiger Zeichnung eintragen	eintragen		keine Zeichnung umsehig
3	Auslaufhöhe mm	messen		mm
4	Einlaufhöhe mm	messen		mm
5	Höhe Beseitigungsgerätes 1	messen		mm
6	Höhe Beseitigungsgerätes 2	messen		mm
7	Höhe Beseitigungsgerätes 3	messen		mm
8	Beseitigung einsteuern und verändern	prüfen		
9	Doppelrührer auf gleiche Gurtlängen achten	prüfen		
10	Beseitiger angeschraubt und gekontrolliert	prüfen		
11	Beseitiger Typ und Beseitigergröße	prüfen		
12	Beseitigerhöhe: Beseitiger-Schweißnähte geprüft	prüfen		
13	Auslaufhöhe montiert und Verschleißschutz	prüfen		
14	Getriebe und Abwurfbach verschleiß	prüfen		
15	Abwurfbach eingeschraubt	prüfen		
16	Bei RC-Elevator u. Hall-Elevator mit RC-Doppel	RC	JA / NEIN	NEIN
17	Leine Querschnitte an Auslauf montiert	prüfen		
18	Leine Querschnitt u. Weitechtlichkeit versch. prüfen	prüfen		
19	Leine Querschnitt u. Weitechtlichkeit versch. prüfen	prüfen		

\* = nur wenn es in der Liste steht

Das ist ein Dokument, das nur für den internen Gebrauch bestimmt ist.



*»Diligence and precision are our top priorities, because our customers judge us by the quality of our work.«*



## ***Planning, production, assembly and maintenance – all from a one-stop shop.***

**With us, you always have a project manager responsible for you, who will be your personal contact from the planning to the completion of your project.**

You get a system that is all of a piece. Our highly qualified employees do the planning on 3-D CAD systems at the most modern CAD workstations. So you can see in detail even before the ground-breaking how your system is going to look. By using 3-D design, we prevent planning errors which cannot be immediately detected in complex 2-D designs.

A modern materials management system ensures that all the parts required for your order go into production with the right properties, in the required quantities and at the right time. The system provides immediate information at any time on the current status of your order.

## ***Even after the assembly of your system, we will still be there for you.***

### **EMERGENCY SERVICE**

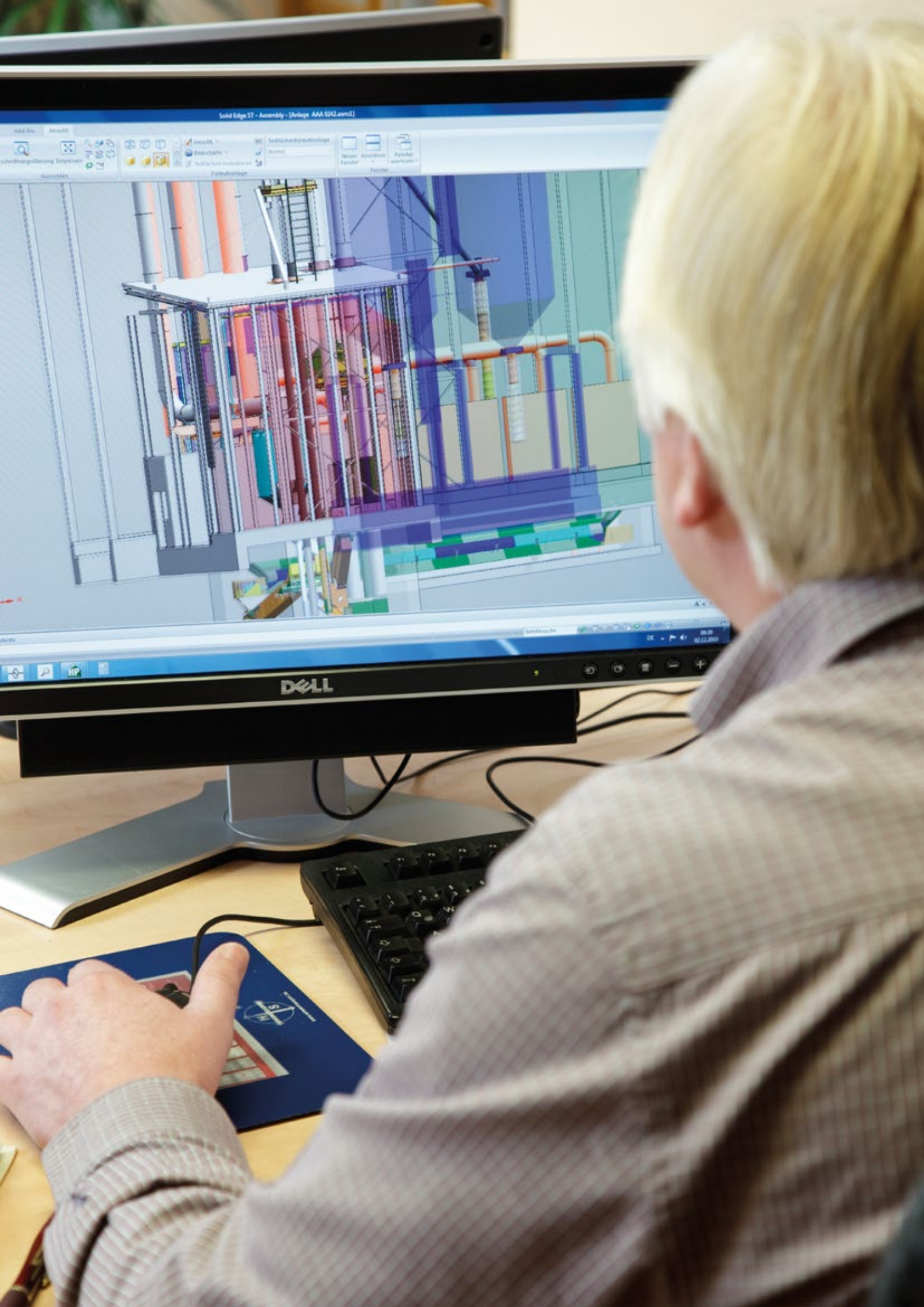
Even outside our normal business hours, you can always reach a contact person who will help you solve your problem. During grain harvest time, we set up a 24-hour emergency service which guarantees immediate troubleshooting. If it should prove necessary, we can put a customer service technician at your disposal at any time. Thanks to our location in the immediate vicinity of Hamburg Airport, a specialist can soon be on site even abroad.

### **SPARE PARTS DELIVERY SERVICE**

Even the best component has to be replaced sometime. To make sure that the downtimes of your system are as short as possible, we keep a large portion of the required spare and wear parts in stock at our central warehouse. Select logistics partners take over the transport so you get your parts safely and on time, even if it means immediately sending the part by courier.

### **MODIFYING YOUR SYSTEM AND ENHANCING ITS PERFORMANCE**

Even if your company is expanding and the system that was supplied is stretched to its limits, we will be at your service with the expertise we have gained in nearly 100 years, working up solutions to modify or enhance the performance of your system. So you see, we will still be your partner tomorrow.



## Reference projects



**PROJECT:** Raiffeisen O.L.D. Goldbeck

**DESCRIPTION:** Silo installation with cylindrical silo cells as storage cells and work cells. Powerhouse.

- Admission capacity 250 metric tons/hour
- Cleaning capacity by way of aspirator 250 metric tons/hour
- Loading capacity 250 metric tons/hour
- Drying plant 20 metric tons/hour
- Dust removal, admission and central



**PROJECT:** Rudolf Peters Landhandel GmbH & Co. KG, Drögenindorf

**DESCRIPTION:** Silo installation with cylindrical silo cells as storage cells and rectangular silo cell block as loading cells. Powerhouse.

- Admission capacity 2 x 150 metric tons/hour
- Drying system
- Mobile truck loading system
- Complete electrical control system



**PROJECT:** Holland Malt, Eemshaven

**DESCRIPTION:** flat storage warehouse with automatic warehouse distribution system.

- Holding capacity, approx. 60,000 metric tons
- Cross-section, 136 x 70 m.
- Conveyor belt distribution system, conveyor capacity 200 metric tons/hour of barley
- 4 Skrapper chain scraper systems, 32 meters in length, conveyor capacity 200 metric tons/hour of barley



**PROJECT:** Wilhelm Fromme GmbH & Co. KG, Beddingen

**DESCRIPTION:** Silo installation with cylindrical silo cells as storage cells and rectangular cells as work cells. Powerhouse.

- Admission capacity 250 metric tons/hour
- Cleaning capacity by way of Vortex 2 x 160 metric tons/hour
- screen cleaning Optima 150 metric tons/hour
- Loading capacity 250 metric tons/hour
- Drying plant
- Central dust removal system



**PROJECT:** Wilhelm Fromme Landhandel GmbH & Co. KG, Beddingen

**DESCRIPTION:** Silo filling elevators and pipe distributor 250 metric tons/hour



**PROJECT:** BAYWA AG , Schweinfurt

**DESCRIPTION:** Silo installation with cylindrical silo cells as storage cells and work cells. Powerhouse.

- Admission capacity 150 metric tons/hour
- Cleaning capacity screen cleaning Optima 150 metric tons/hour
- Admission and central dust removal system
- Complete electrical control system



# Your contact partners

## MANAGEMENT



**ANDREAS ZUTHER**

*Management*

Tel: +49(0) 5861 961-16

Email: andreas\_zuther@zuther-online.de

## TECHNICAL DEPARTMENT/SALES



**ANDREAS OLSCHNER**

*Project manager in the field*

Tel: +49(0) 1719339898

Email: olschner@zuther-online.de



**LUTZ GELÄSCHUS**

*Technical director*

Tel: +49(0) 5861 961-25

Email: gelaeschus@zuther-online.de



**MICHAEL SCHMIEL**

*Project manager*

Tel: +49(0) 5861 961-55

Email: schmiel@zuther-online.de



**MATTHIAS WARNKE**

*Project planning*

Tel: +49(0) 5861 961-11

Email: warnke@zuther-online.de



**Gerd Binder**

*Project planning*

Tel: +49(0) 5861 961-20

Email: binder@zuther-online.de



**DIERK MAURISCHAT**

*Spare parts service*

Tel: +49(0) 5861 961-13

Email: maurischat@zuther-online.de

## BOOKKEEPING/SECRETARY'S OFFICE/PURCHASING



**DAGMAR PAUST**

*Bookkeeping*

Tel: +49(0) 5861 961-10

Email: paust@zuther-online.de



**KERSTIN KRÜGER**

*Secretary's office*

Tel: +49(0) 5861 961-91

Email: krueger@zuther-online.de



**ALEXANDER POPKO**

*Head of purchasing department*

Tel: +49(0) 5861 961-57

Email: popko@zuther-online.de

***Your specialist for grain management  
For nearly 100 years.***





ZUTHER GMBH  
An der Bundesstraße Nr. 8-9  
D-29481 Karwitz/Dannenberg

Tel: +49(0) 5861 961-0  
Fax: +49(0) 5861 961-40  
E-Mail: [info@zuther-online.de](mailto:info@zuther-online.de)  
Internet: [www.zuther-online.de](http://www.zuther-online.de)

