

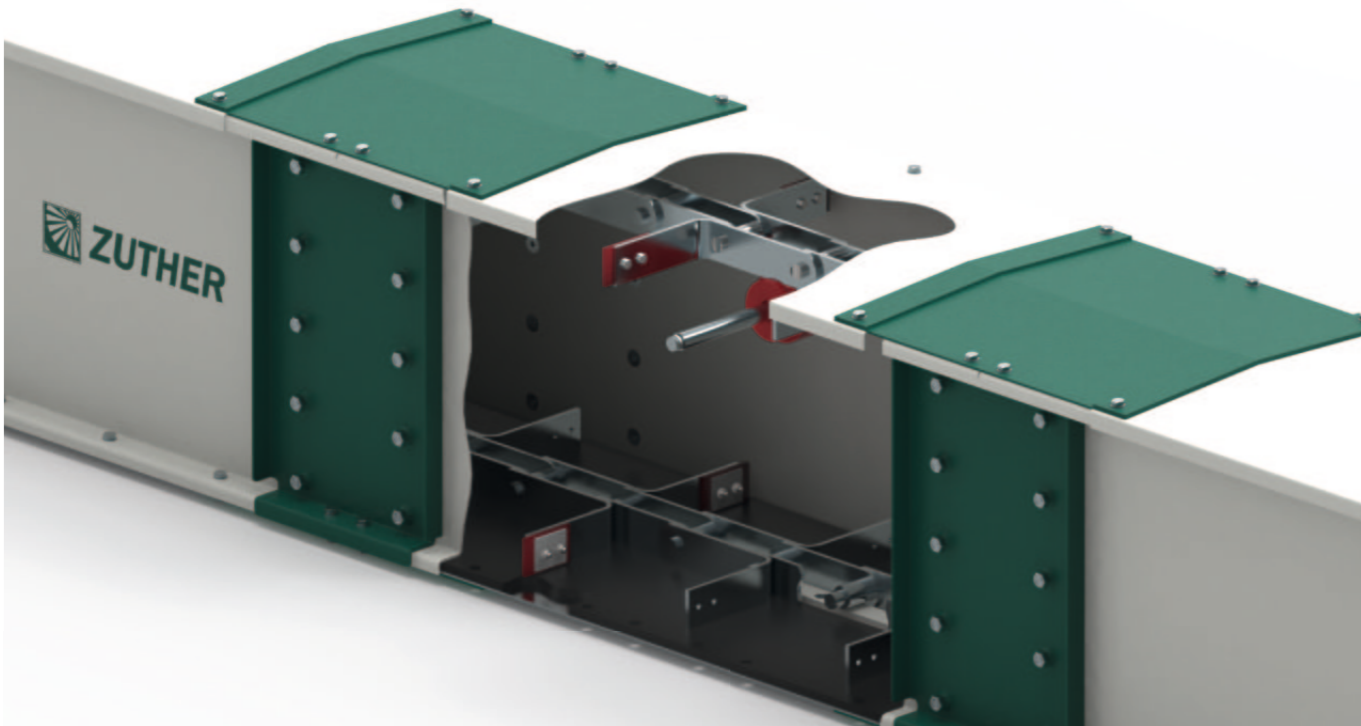
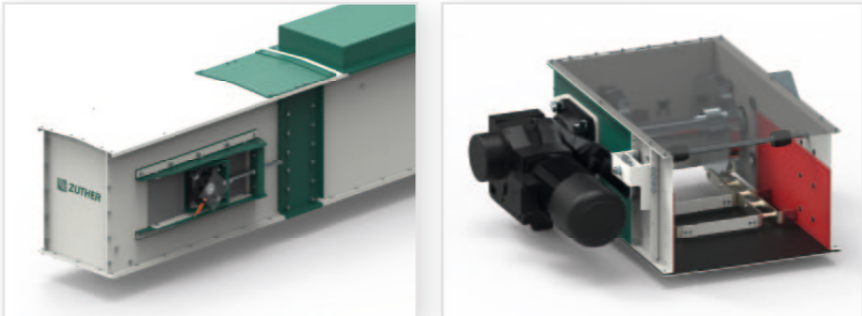
CHAIN CONVEYOR

TYPE TFX R17-R82

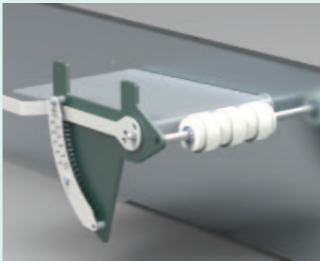


FIND OUT MORE

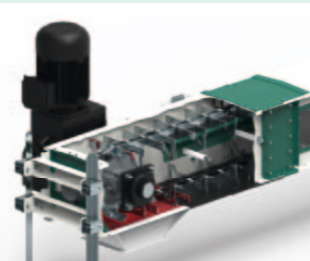
- Capacity up to 800 t/h*
- For various bulk materials and applications
- High performance and reliable design
- Plastic floor available as optional equipment
- Modular system
- Easy maintenance
- Material: Galvanised, painted or made of stainless steel



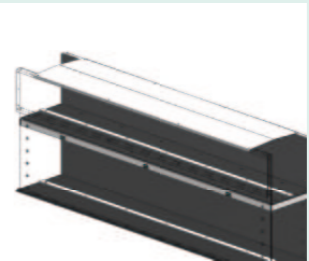
OPTIONAL EQUIPMENT:



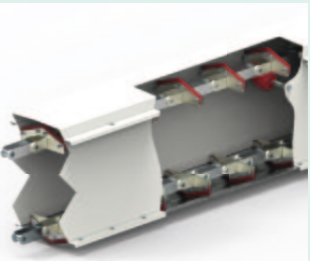
Adjustable vertical bulkhead, used to regulate the filling level



Variant with raised carriers, for rising trough chain conveyors



Version with intermediate floor and trough elevation, as well as lateral wear lining in the trough



Variant with V-bottom, for residue-free conveying

MANY OTHER EQUIPMENT OPTIONS AVAILABLE



TROUGH CHAIN CONVEYORS IN THE TFX SERIES

The trough chain conveyors in the TFX series are made entirely of galvanised sheet steel and can also be used outdoors due to the standard rain collar on the edge. To reduce noise, the floor is fitted with a PE plastic plate and a guide rail as standard, which also guarantees low-wear operation of the conveyor chain. All components used in this series meet a high quality standard and guarantee fault-free operation even under difficult operating conditions.

Our conveyors are designed for high performance and reliable operation. Thanks to a wide range of standard equipment options, the conveyors can meet a wide range of performance requirements.

PRICE/PERFORMANCE

Standardisation and use of the latest manufacturing technologies allow us to produce high-quality conveyors and guarantee flexible customer service at extremely attractive prices.

*Approximate capacity in t/h at 0.75 t/m³

| TKF types | R17 | R26 | R30 | R35 | R42 | R50 | R65 | R82 |
|------------------------|---------------|---------------|---------------|---------------|---------------|---------------|---------------|---------------|
| Capacity in t/h* | 5 - 30 | 30 - 90 | 90 - 120 | 120 - 150 | 150 - 250 | 250 - 320 | 320 - 400 | 400 - 500 |
| Max. filling level | 170 | 260 | 300 | 300 | 430 | 430 | 430 | 430 |
| Trough width left. w. | 170 | 260 | 300 | 350 | 420 | 500 | 650 | 820 |
| Trough height left. w. | 339 | 442 | 442 | 442 | 610 | 610 | 610 | 610 |
| Exterior trough width | 245 | 336 | 376 | 426 | 496 | 576 | 727 | 897 |
| Sprocket pitch circle | 261 | 365,5 | 365,5 | 365,5 | 518 | 518 | 518 | 518 |
| Chain division | 100 | 125 | 125 | 125 | 160 | 160 | 160 | 160 |
| Sheet metal floor | 2 | 2 | 2 | 2 | 3 | 3 | 4 | 5 |
| Sheet metal sides | 3 | 3 | 3 | 3 | 3 | 3 | 3 | 4/5 |
| Sheet metal cover | 2 | 2 | 2 | 2 | 2 | 2 | 3 | 4 |
| Plate link chain | Single strand | Single strand | Single strand | Single strand | Single strand | Single strand | Single strand | Double strand |

* Maximum conveying capacity at 0.6 m/s conveying speed at a bulk density of 0.75 t/m³ heavy grain, chain/sprockets Zuther standard. All specifications in mm