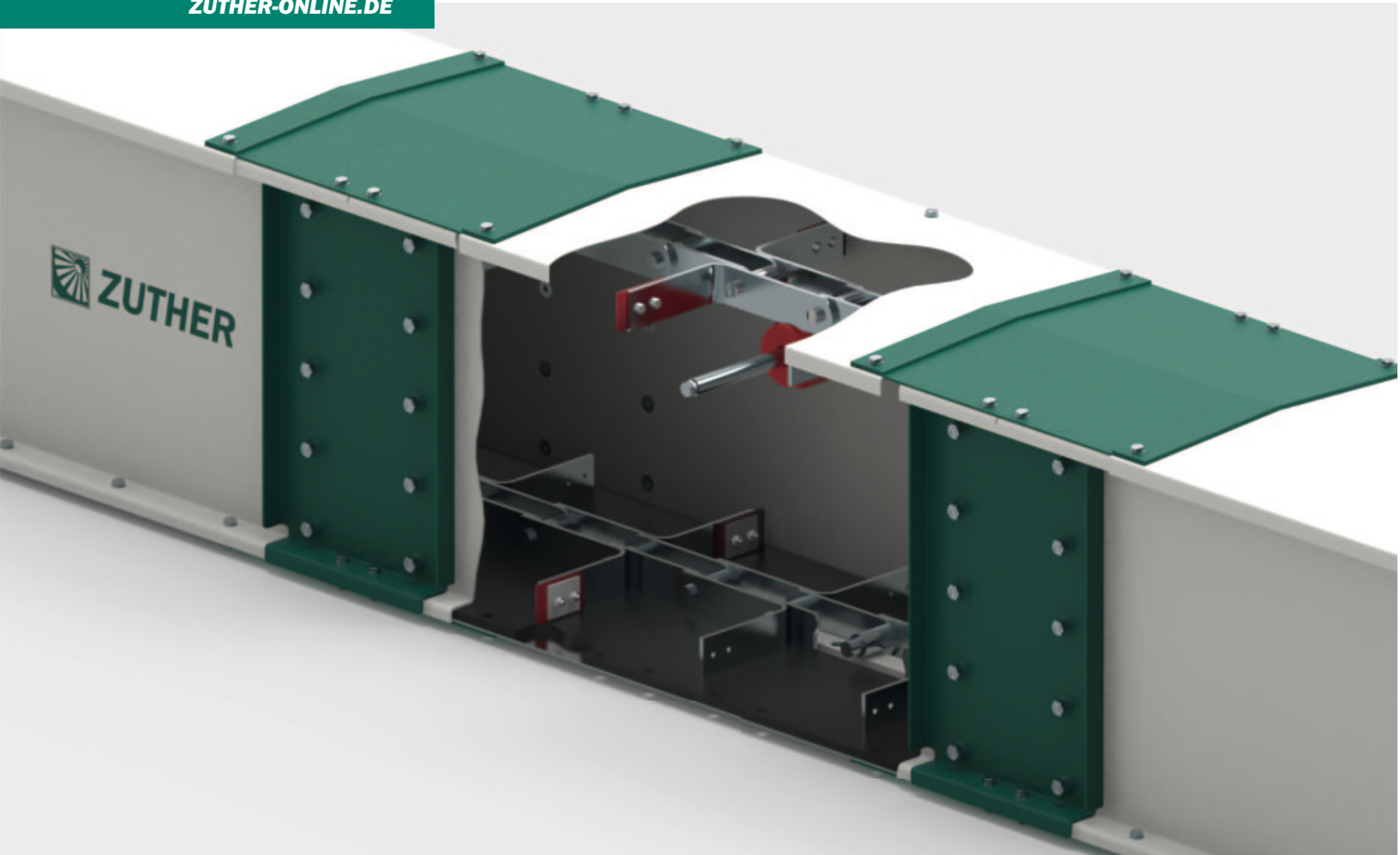



ZUTHER-ONLINE.DE



# ***QUALITY BY TRADITION***

Your partner for bulk handling systems. For  years.





# Contents

Brief introduction to Zuther .....	Page	4-5
Bucket elevators .....	Page	6-7
Chain and belt bucket elevators .....	Page	8-9
Chain conveyors .....	Page	10-11
Belt conveyors .....	Page	12
Sliding belt conveyors .....	Page	13
Flat storage system .....	Page	14
Chain scrapers .....	Page	15
Screw conveyors .....	Page	16-17
Bulk material collection .....	Page	18-19
Bulk material cleaning .....	Page	20-21
Moistening screw .....	Page	22
Ship loading system .....	Page	23
Pipe construction .....	Page	24
Hinged box system .....	Page	25
Sliders .....	Page	26
Loading bellow .....	Page	27
Dust loading system .....	Page	28
Our services .....	Page	29-31



## QUALITY BY TRADITION. FOR OVER 100 YEARS.

Zuther GmbH today is one of the leading providers of professional bulk material handling systems, supplying machines and turnkey systems for use in various industries. Our family business has more than 100 years of experience. With their hallmarks of reliability and quality, our machines prove themselves every day around the world under the toughest operating conditions.

Established in 1921 and now in its fourth generation, much has changed since the foundation of our company. Our principles, such as cooperation based on partnership, an aspiration to the highest levels of quality and reliability and the pursuit of innovation and sustainability, served us well back then and will continue to determine our actions in the future. We are proud of our tradition and pioneering spirit.



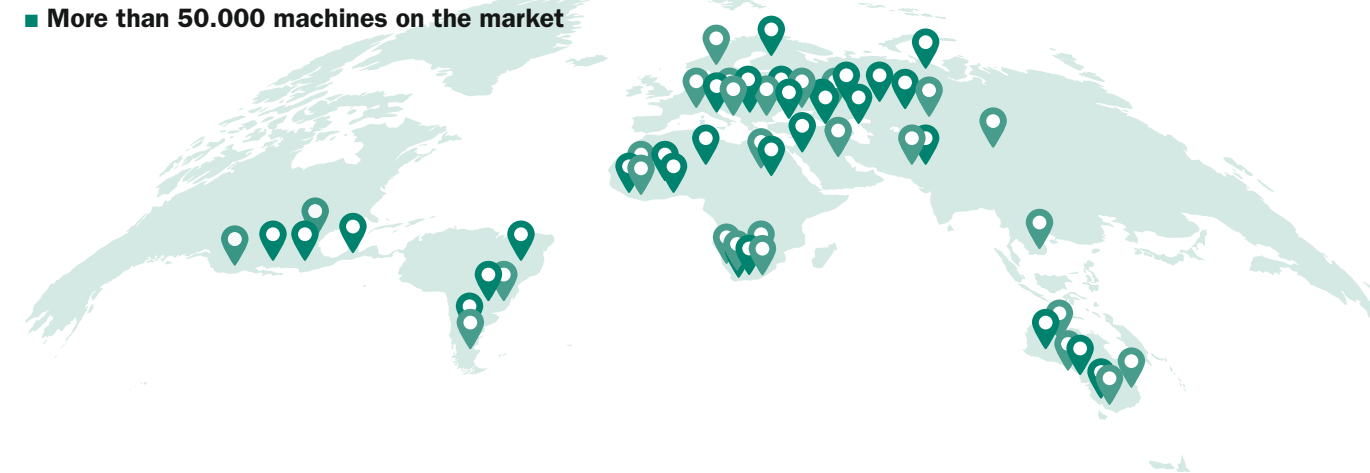
## FROM GERMANY OUT INTO THE WORLD. MACHINE TECHNOLOGY ACROSS INDUSTRIES.

Our experience across industries, gathered over more than 100 years, is the foundation for our quality and our broad product portfolio. Zuther supplies turnkey plants and machines in various industries and for a wide range of bulk materials. We have the right solution for your bulk goods.



## WORLDWIDE REFERENCES. USE UNDER THE TOUGHEST OPERATING CONDITIONS.

- References on 6 continents around the world
- More than 50.000 machines on the market



## QUALITY AND RELIABILITY. OUR TOP PRIORITY.

At our headquarters in Karwitz, we have always endeavoured to use the latest manufacturing technologies and to ensure that our production is flexible. Our use of the latest machines not only allows us to meet major requirements in a short time, it also guarantees consistently high quality. With their many years of service and excellent training, our employees are the face of the company, working every day to ensure maximum satisfaction among our customers.

Combined with our automated production, state-of-the-art IT systems such as CAD and ERP along with a modern online product configurator ensure a lean and efficient process, allowing us not only to guarantee our customers an optimum price-performance ratio, but also to be there as a reliable partner, both today and in the future.

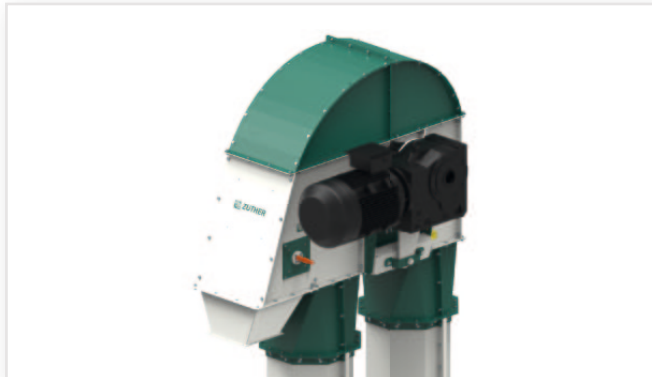




# BUCKET ELEVATORS

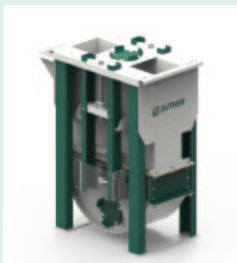
## TYPE E00-E10

- Capacity of up to 800 t/h\*
- Standardised modular system, suitable for various bulk materials
- High reliability due to sophisticated technical design
- High-performance bucket systems – elevator belt resistant to oil and grease
- Material: Galvanised, painted or made of stainless steel



FIND OUT MORE

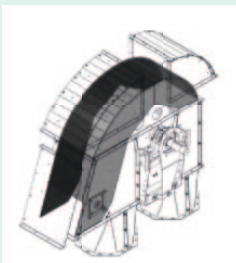
### OPTIONAL EQUIPMENT:



Telescopic elevator foot for improved residue clearance



Separate aspiration chamber for aspiration



Wear lining over entire discharge ramp



Modular elevator head platform for maintenance work

MANY OTHER EQUIPMENT OPTIONS AVAILABLE



### DESIGN

All elevators are equipped with high-quality drive components, elevator belts and elevator buckets. In combination with a solid sheet steel construction, they ensure high durability and thus protect your investment. Food-safe design possible.

Our bucket elevators are put through their paces every day around the world under the toughest conditions. They are easy and efficient to maintain thanks to a variety of maintenance flaps in the head, foot and elevator shaft.

### WE'RE HAPPY TO ADVISE YOU

The sophisticated technical design of our elevators gives them a high load capacity, allowing free-standing installation. Tall construction heights are also possible, with no need for expensive supporting tower structures. In addition to a strong price/performance ratio, we offer you high reliability for your process.

### DESIGN ALSO IN ATEX DIRECTIVE

On request, we can equip our bucket elevators with misalignment monitoring, electronic speed monitoring, complete motor winding protection and full indicators. Pressure relief flaps at the head and at the shaft are available as an option. The shaft can also be equipped with a point filter.

### SELF-SUPPORTING CONSTRUCTION

You describe your problem to us and we will make you a detailed and technically sophisticated offer. Elevator shaft enables efficient maintenance.

\*Approximate capacity in t/h at 0.75 t/m<sup>3</sup>

Destination/size	E00	E03	E05	E07	E08	E09	E10
Capacity in t/h	5 - 20	20 - 70	70 - 150	150 - 250	250 - 300	300 - 500	500 - 600
Elevatorfoot height	780	1.100	1.285	1.400	1.506	1.603	2.000
Elevatorfoot height left w.	500	750	985	1.145	1.310	1.430	1.600
Elevatorhead height	503	800	1.065	1.210	1.447	1.470	1.805
Elevatorhead width left w.	760	1.164	1.490	1.636	1.858	2.000	2.345
Inlet height left w. (asc side)	750	990	1.235	1.307	1.450	1.492	2.050
Inlet height left w. (desc side)	650	875	1.075	1.122	1.300	1.342	1.900
Center distance shaft to shaft	single shaft	530	705	805	920	980	1.080
Shaft panel thickness	2	2/3	2/3	2/3	2/3	2/3	2/3
Head panel thickness	3	3	4	5	5	5	6
Foot panel thickness	3	4	4	5	5	5	6

\*) Max. Conveying capacity at a bulk density of 0.75 t/m<sup>3</sup> heavy grain. All dimensions in mm.



# CHAIN AND BELT BUCKET ELEVATORS TYPE BWX

- Capacity of up to 1.000 t/h\*
- Standardised modular system, suitable for heavy bulk materials
- Virtually no limits in terms of discharge height and conveying
- Extremely reliable due to sophisticated technical design
- Easy maintenance thanks to ample maintenance hatches
- Planning and production according to customer requirements
- Various wear linings available



FIND OUT MORE



## OPTIONAL EQUIPMENT:



Elevator foot  
Chain bucket elevator  
with two-strand chain



Chain bucket elevator with maintenance  
platform, buckets with triple edge reinforcement



Elevator foot  
Belt bucket elevator



Belt bucket elevator with maintenance  
platform, buckets with triple edge reinforcement

MANY OTHER EQUIPMENT OPTIONS AVAILABLE



## CHAIN BUCKET ELEVATORS FROM ZUTHER – ROBUST AND RELIABLE

Our robust chain and belt bucket elevators are designed for use wherever particularly heavy bulk materials need to be conveyed, or where the bulk materials are particularly abrasive. In terms of reliability and performance, the bucket elevator sets new standards. Our two-strand Zuther chain impresses with its particularly high level of stability. In addition, buckets, inlet lugs and outlet lugs and clips can be equipped with wear linings. Generously dimensioned access points make it easy to carry out maintenance work. The enclosed shaft allows free-standing installation. The elevators in the BWX series are optionally available up to a length of 40 metres fully assembled in the factory and delivered in one piece.

\*Approximate capacity in t/h at 0.75 t/m<sup>3</sup>





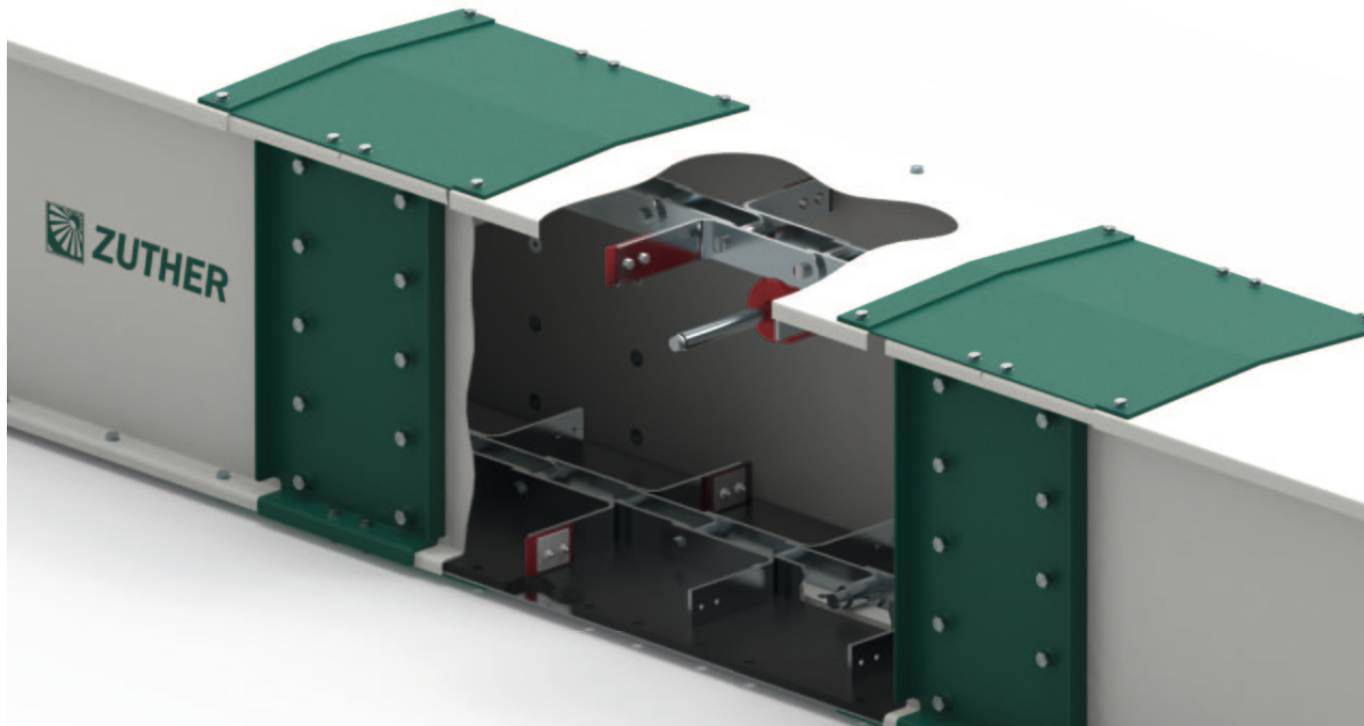
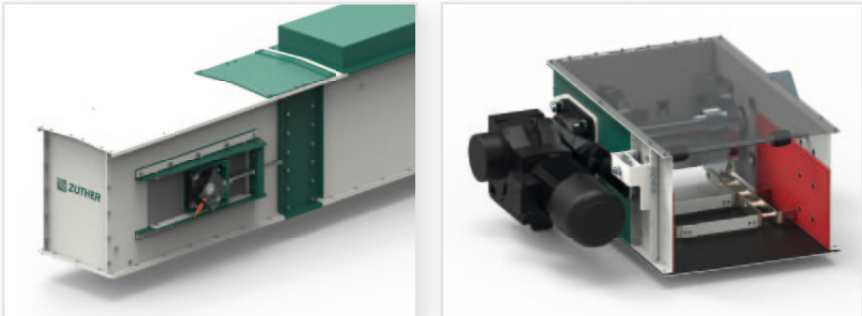
# CHAIN CONVEYOR

## TYPE TFX R17-R82

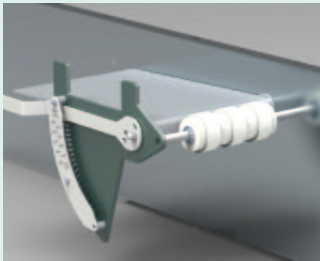
- Capacity up to 800 t/h\*
- For various bulk materials and applications
- High performance and reliable design
- Plastic floor available as optional equipment
- Modular system
- Easy maintenance
- Material: Galvanised, painted or made of stainless steel



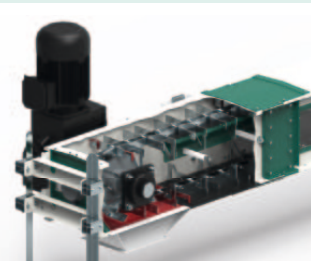
FIND OUT MORE



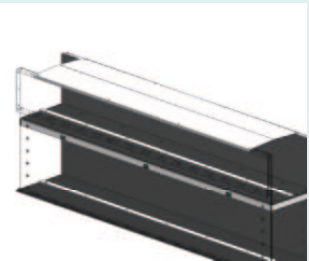
### OPTIONAL EQUIPMENT:



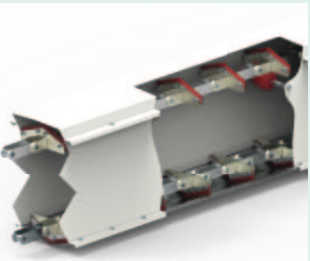
Adjustable vertical bulkhead, used to regulate the filling level



Variant with raised carriers, for rising trough chain conveyors



Version with intermediate floor and trough elevation, as well as lateral wear lining in the trough



Variant with V-bottom, for residue-free conveying

MANY OTHER EQUIPMENT OPTIONS AVAILABLE



### TROUGH CHAIN CONVEYORS IN THE TFX SERIES

The trough chain conveyors in the TFX series are made entirely of galvanised sheet steel and can also be used outdoors due to the standard rain collar on the edge. To reduce noise, the floor is fitted with a PE plastic plate and a guide rail as standard, which also guarantees low-wear operation of the conveyor chain. All components used in this series meet a high quality standard and guarantee fault-free operation even under difficult operating conditions.

Our conveyors are designed for high performance and reliable operation. Thanks to a wide range of standard equipment options, the conveyors can meet a wide range of performance requirements.

### PRICE/PERFORMANCE

Standardisation and use of the latest manufacturing technologies allow us to produce high-quality conveyors and guarantee flexible customer service at extremely attractive prices.

TKF types	R17	R26	R30	R35	R42	R50	R65	R82
Capacity in t/h*	5 - 30	30 - 90	90 - 120	120 - 150	150 - 250	250 - 320	320 - 400	400 - 500
Max. filling level	170	260	300	300	430	430	430	430
Trough width left. w.	170	260	300	350	420	500	650	820
Trough height left. w.	339	442	442	442	610	610	610	610
Exterior trough width	245	336	376	426	496	576	727	897
Sprocket pitch circle	261	365,5	365,5	365,5	518	518	518	518
Chain division	100	125	125	125	160	160	160	160
Sheet metal floor	2	2	2	2	3	3	4	5
Sheet metal sides	3	3	3	3	3	3	3	4/5
Sheet metal cover	2	2	2	2	2	2	3	4
Plate link chain	Single strand	Single strand	Single strand	Single strand	Single strand	Single strand	Single strand	Double strand

\*Approximate capacity in t/h at 0.75 t/m³

\* Maximum conveying capacity at 0.6 m/s conveying speed at a bulk density of 0.75 t/m³ heavy grain, chain/sprockets Zuther standard. All specifications in mm

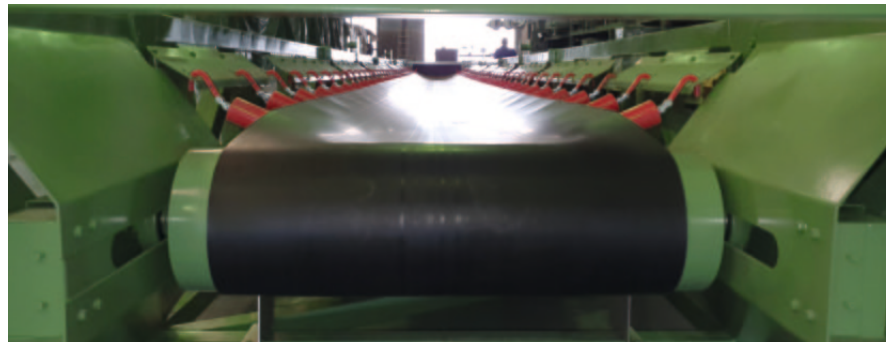


## BELT CONVEYOR

- Up to 1.000 t/h\*, customer-specific also higher
- Suitable for conveying over long distances
- Also suitable for sensitive and abrasive bulk materials
- Cover hoods and inlet clips available
- Various applications possible
- Low operating and maintenance costs
- Material: Galvanised, painted or made of stainless steel



FIND OUT MORE



### TROUGHED BELT CONVEYORS FROM ZUTHER

Our troughed belt conveyors enable a very wide performance range of up to 1,000 t/h\* and bridge distances of well over 150 metres. The idler stations are very high quality, low maintenance and require low maintenance costs. Our conveyor belts are characterised by their reliability and universal application range. Whether grain, minerals or fertiliser: we find the best solution for every requirement. Also available in stainless steel construction and with FDA approval. In addition, conveyor belts are a key element of our highly efficient, fully automatic warehouse loading system for specialist warehouses.

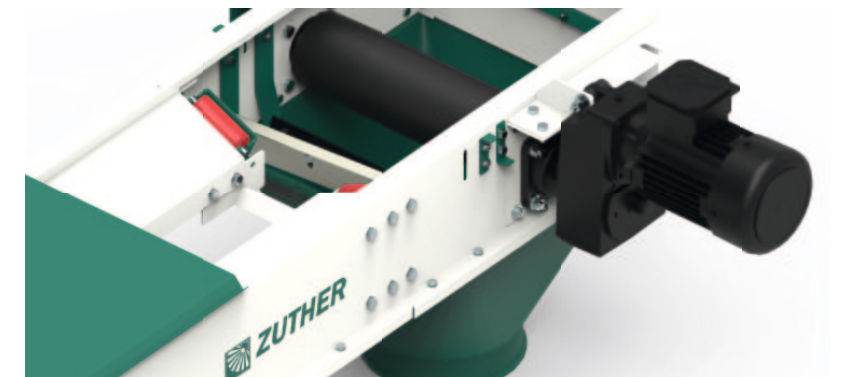
\*Approximate capacity in t/h at 0.75 t/m<sup>3</sup>

## SLIDING BELT CONVEYOR

- Capacity of up to 70 t/h\*
- Optimum price/performance ratio
- Gentle, residue-free transport
- Cover hoods and inlet clips available
- Can be completely encapsulated and aspirated
- Material: Galvanised, painted or made of stainless steel



FIND OUT MORE



### SORTED CONVEYING THROUGH DIVIDED SLIDING TROUGH

Our sliding belt trough belts are made for low to medium performance. Our design impresses with its compact construction as a box belt, sorted and clean conveying and attractive purchase costs.

The divided sliding trough not only avoids the use of complex idler stations, it also enables sorted conveying. The conveyor is particularly suitable for seeds or unpackaged foodstuffs.

The residues are discharged via the belt scrapers mounted on the sliding floor. With optional belt covers and bottom plates, this system can be completely enclosed and aspirated.

\*Approximate capacity in t/h at 0.75 t/m<sup>3</sup>

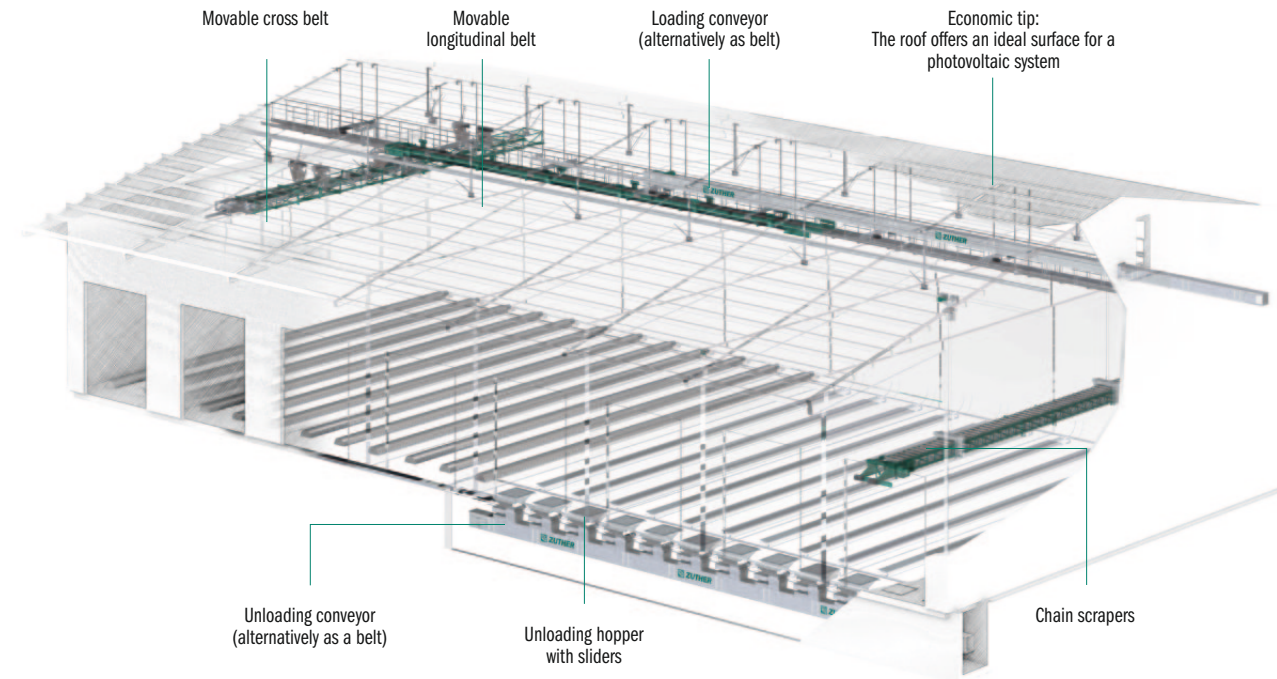


## FLAT STORAGE SYSTEM



FIND OUT MORE

- Large storage volume even on difficult ground
- Automated warehouse loading with a mobile belt conveyor
- Automated unloading by chain scraper and discharge conveyor
- Low personnel resources required due to automation
- Other uses possible (packaged goods, machine hall, etc.)



### ENGINEERING – QUALITY BY TRADITION

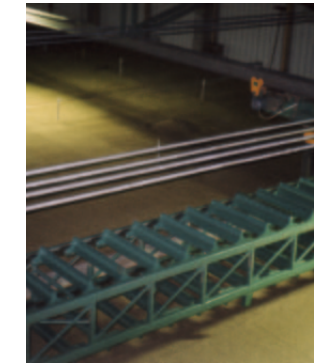
Flat storage warehouses are a good alternative to silo systems. They can also be used where the load-bearing capacity of the ground makes round silos impossible or where local building regulations impose limits on the maximum building height. Existing buildings can usually also be converted into flat storage warehouses without great expense. Use of our warehouse loading system not only automates the entire process, it also offers the advantage that its movable belts enable utilisation of the entire volume of the warehouse. Together with our customers, we develop efficient approaches to ensure the economic efficiency of the system.

## CHAIN SCRAPERS



FIND OUT MORE

- Conveying capacity up to 300 t/h\*
- Can be used for automatic emptying and for levelling the material cone
- Highly cost-effective, energy-efficient, low-maintenance and low-wear
- Robust, stable but nevertheless light construction (low ceiling loads)
- Optimum cooling due to precisely levelled surface of the grain



### CHAIN SCRAPERS

Our chain scrapers can achieve the highest possible degree of automation. The scrapers are not only suitable for emptying the flat storage warehouse, they can also be used for levelling, avoiding material cones and making the best possible use of the storage volume. In addition, optimal and efficient ventilation is also possible.

### STAFF-SAVING VARIANT

Use of the chain scraper reduces the number of staff needed to unload the flat storage warehouse. You also benefit from higher efficiency and unloading capacity per hour.

\*Approximate capacity in t/h at 0.75 t/m<sup>3</sup>



## SCREW CONVEYORS

### TUBULAR SCREW CONVEYOR

- Conveying capacity up to 350 t/h\*
- Suitable for grain, sand, asphalt filler, concrete and much more.
- Zuther labyrinth seal and thrust bearing, dust-tight
- Tried and tested, high-performance system
- Various applications possible
- Maintenance-friendly due to ample hatches
- Material: Galvanised, painted or made of stainless steel



FIND OUT MORE



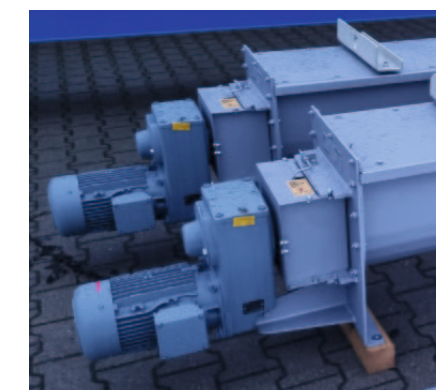
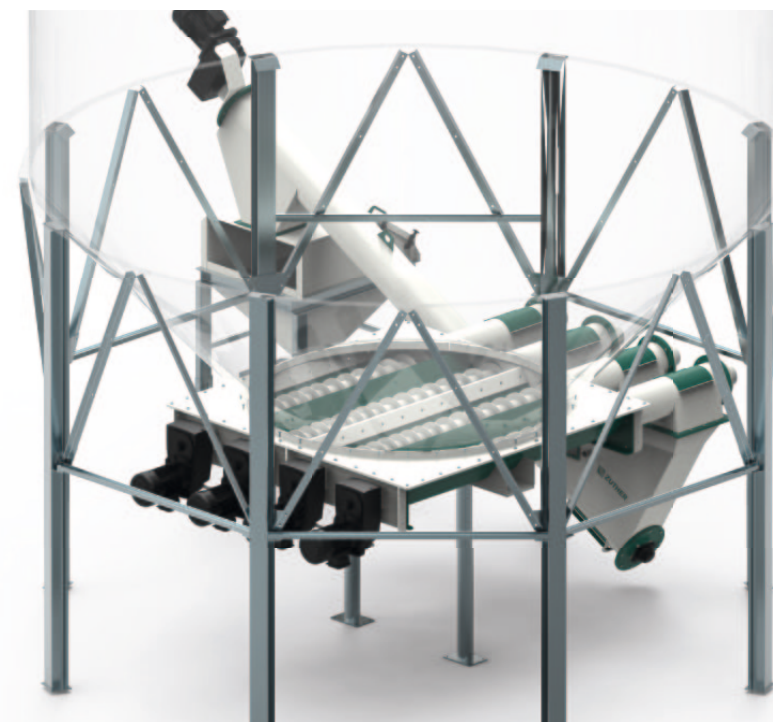
## SCREW CONVEYORS

### TROUGH CONVEYOR

- Conveying capacity up to 350 t/h\*
- Suitable for a wide range of bulk materials
- Variety of wear linings available
- Zuther labyrinth seal and thrust bearing, dust-tight
- Tried and tested, high-performance system
- Can also be used as unloading screws for e.g. filter systems
- Material: Galvanised, painted or made of stainless steel



FIND OUT MORE



#### ZUTHER SCREW CONVEYORS – RELIABLE AND IN USE ACROSS INDUSTRIES

Our screw conveyors prove themselves under the toughest operating conditions around the world. On the basis of many years of experience across industries, we offer our customers high levels of quality and reliability. Our screw conveyors are suitable for many different applications. Whether used as connecting, unloading, dosing, stuffing or dewatering screw conveyors.

Our technology ensures reliable operation. Particularly noteworthy here is the highly effective sealing of the screw tube by the Zuther labyrinth seal, which prevents the material being conveyed from escaping on the screw shaft, which could otherwise lead to contamination and damage to the bearings.

\*Approximate capacity in t/h at 0.75 t/m<sup>3</sup>

\*Approximate capacity in t/h at 0.75 t/m<sup>3</sup>

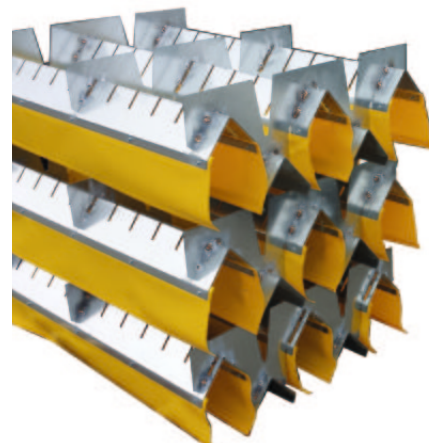
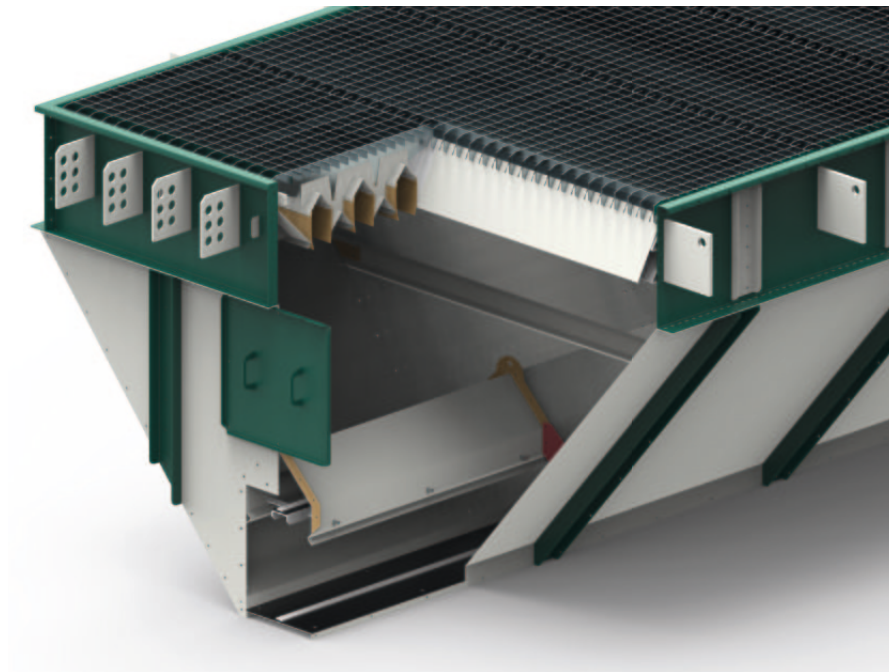


## BULK MATERIAL COLLECTION RECEIVING PIT

- Traversable variant, wheel pressure up to 10 t
- High receiving capacities possible
- Hygiene-optimised design for virtually no residues
- Dust barriers for reduced dust
- Numerous optional features
- Perfect fit: quick and easy assembly



FIND OUT MORE



### HYGIENE-OPTIMISED BULK MATERIAL COLLECTION

The Zuther receiving pit impresses with its hygiene-optimised design. Its special construction ensures almost residue-free operation. Our gratings are easy to remove and designed to withstand wheel pressures of up to 10 tonnes. The receiving hopper is made of welded and bolted sheet steel with an integrated unloading channel. With its integrated pit haul-off, the Zuther pit requires less installation depth.

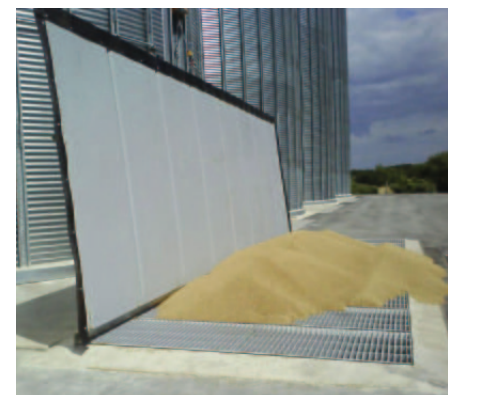
The Zuther dust barriers ensure a low level of dust discharge. These can also be installed later. A stationary pit dedusting system is also optionally available. The special construction ensures quick and precise assembly: The pit is usually delivered as a single component and "hooked" into the concrete on site.

## BULK MATERIAL COLLECTION PIT COVER

- Pit cover for outdoor installation
- Electric cable lifting device
- Simultaneous use as a filler wall when open
- Simultaneous use as a filler wall
- Rainproof design



FIND OUT MORE



### PIT COVER FROM ZUTHER

A receiving pit in the open air should always be protected against rain and dirt.

Our pit cover is operated electrically with a cable lifting device, making it easy to open and close the cover and saving on staff.

The open cover also acts as a filler wall, making it easier to unload arriving vehicles. This design can be flexibly adapted to all pit sizes.



## BULK MATERIAL CLEANING

### OPTIMA THE HIGH-PERFORMANCE ASPIRATOR

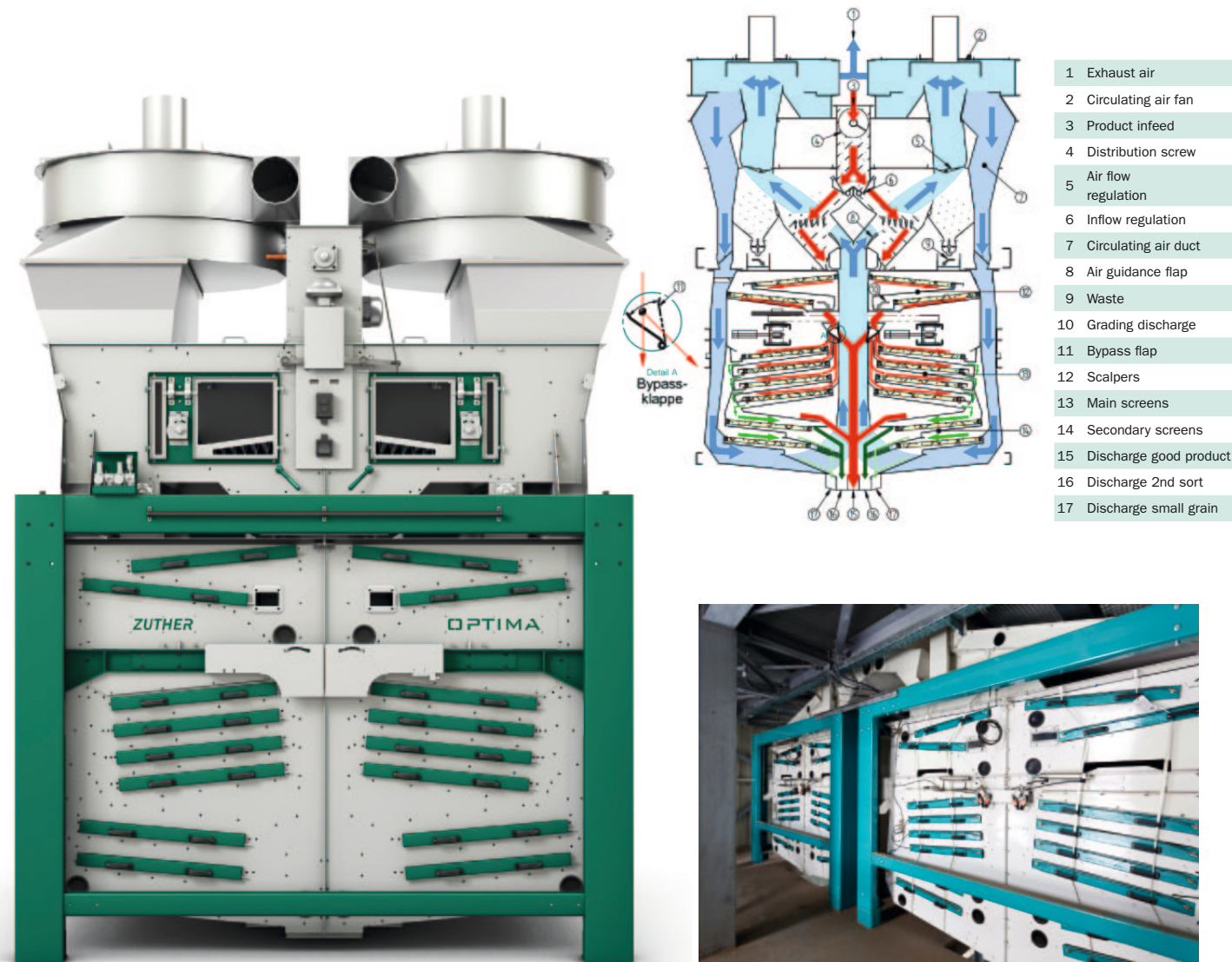


FIND OUT MORE



CLEANING  
TECHNOLOGY  
BROCHURE

- Light fraction separation and size classification
- Exact sorting of mixed grain into three sizes
- Precise removal of dust and low-density particles
- Preparation of various kinds of grain without changing the screen
- Very compact, low-maintenance design
- High-performance, up to 160 t/h\*
- Only 15-20% exhaust air



#### THE "OPTIMA" HIGH-PERFORMANCE ASPIRATOR

is suitable for multi-grade operation without changing screens and has been tested with a wide range of cereals and legumes. A capacity of up to 160 t/h\* can be achieved. The OPTIMA is used for scalping and main cleaning of virtually all cereals and can be implemented universally. The integrated screen bypass makes it possible to work only with the air separator. The OPTIMA is also equipped for the harshest working conditions. In the event of uneven intake, the machine automatically regulates the capacity in the air separating chamber. Internally, distribution devices ensure optimal utilisation of the entire machine width. Because it operates with circulating air, the Optima produces only 15-20% exhaust air.

\*Approximate capacity in t/h at 0.75 t/m<sup>3</sup>

## BULK MATERIAL CLEANING

### VORTEX THE OPTIMUM PRE-CLEANER



FIND OUT MORE



CLEANING  
TECHNOLOGY  
BROCHURE

- Excellent cleaning performance
- Throughput capacity 80-300 t/h
- Compact design, minimal space requirement
- Environmentally friendly thanks to circulating air system, 15-20% exhaust air
- Excellent price-performance ratio



#### THE "VORTEX" BULK GOODS CLEANER

is an air classifier that combines important sorting components in a single machine in the smallest possible space, achieving a throughput of up to 300 t/h\*. You will not find maintenance-free rotational distribution of bulk solids with the ingenious and simple ring gap air sifter geometry and the effective compact dust separator fan combination (circulating air separator) in this space-saving, cylindrical design in other solutions. This results in a major advantage: the VORTEX can be easily and quickly integrated into existing plants.

\*Approximate capacity in t/h at 0.75 t/m<sup>3</sup>

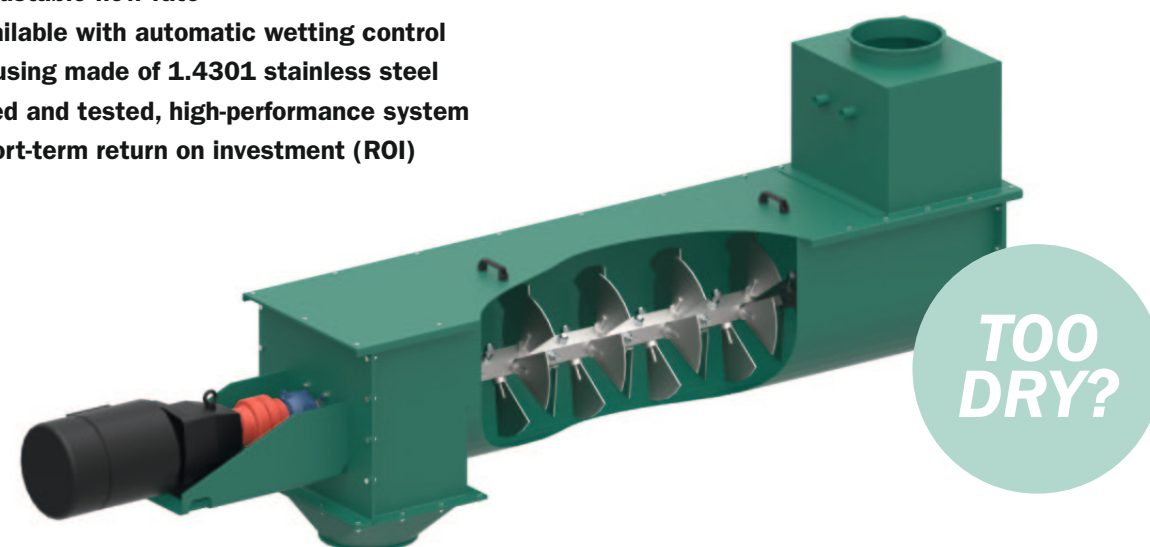


## MOISTENING SCREW

- Capacity of up to 200 t/h\*
- Adjustable flow rate
- Available with automatic wetting control
- Housing made of 1.4301 stainless steel
- Tried and tested, high-performance system
- Short-term return on investment (ROI)



FIND OUT MORE



### MOISTENING SCREWS FROM ZUTHER

Automatic wetting control is used to achieve constant grain moisture.

The control system calculates the amount of water needed to achieve the required moisture level from the grain moisture and throughput and adds it to the grain. Our moistening screw comes with adjustable flow rate control, ensuring that the best possible result can always be achieved.

### SHORT-TERM RETURN ON INVESTMENT

At 1-2% wetting and 50.000 t throughput per year, after approximately 2 - 3 years.

\*Approximate capacity in t/h at 0.75 t/m<sup>3</sup>

## SHIP LOADING SYSTEMS

- Loading capacity 1.000 t/h\*
- Swivelling and telescopic
- Reduction of hauling
- Individual solutions
- Optionally with integrated belt scale



FIND OUT MORE



### SHIP LOADING SYSTEMS FROM ZUTHER

We offer a wide range of different solutions for ship loading. Our goal is always to avoid or reduce the number of times ships have to change position in order to make the loading process as efficient as possible for the customer. Our loading systems are available in a wide variety of designs, e.g. swivelling up to 180° and equipped with a telescopic conveyor belt. This technology proves its reliability in many different ports.

\*Approximate capacity in t/h at 0.75 t/m<sup>3</sup>



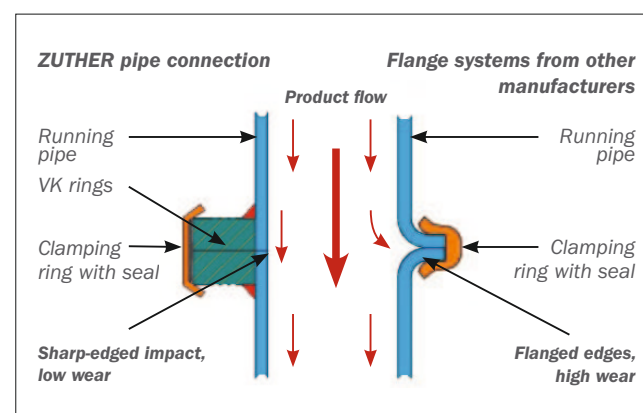
## PIPE SYSTEM

- Flexible and robust pipe system
- Avoidance of flanged abutting edges
- Compatible with conventional flange systems
- Stable pipe connection due to clamping rings
- Available in diameters of 200 mm, 250 mm, 300 mm, 350 mm, 400 mm
- Optionally available with wear lining
- Easy installation
- Explosion protection as per ATEX directive
- Large product range

REQUEST  
PRICE LIST  
NOW



FIND OUT MORE

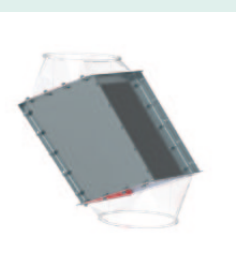


### OPTIONAL EQUIPMENT:

Selection from the product range



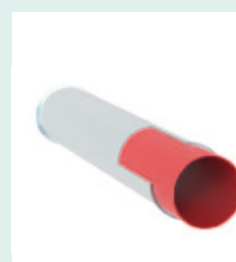
45° pipe branch with square ring made of 3 mm standard steel



Impact nozzle made of 3 mm standard steel with wear lining



Pipe segment in 4 mm standard steel with wear lining



3 mm running pipe made of standard steel with wear lining



Clamping ring connection to the conventional flange system using an adapter

### LIMITLESS VARIETY

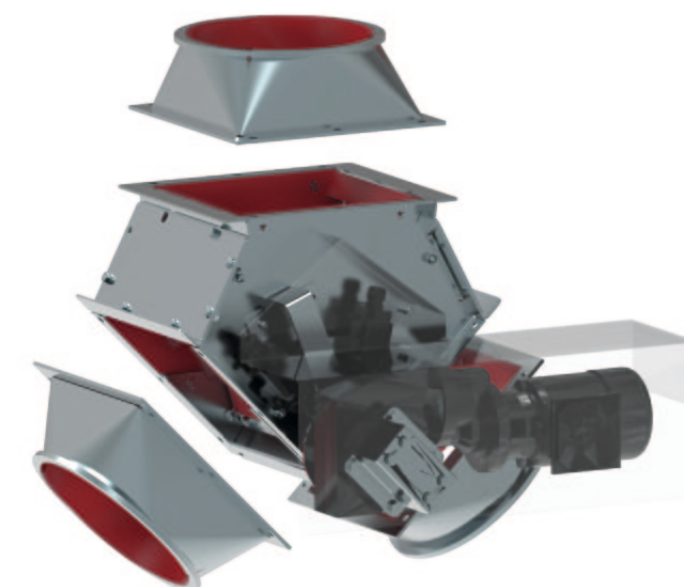
The ZUTHER pipe system offers countless installation options, making flexibility in pipe construction almost limitless. The ZUTHER system can be easily integrated into any existing pipe construction using the adapter pieces available. Our pipes can be individually adapted to different requirements with a wide variety of angles and designs. Our pipe system includes a wide range of products, such as hinged boxes and sliders in various designs.

## HINGED BOX SYSTEM

- Direct scanning of the shaft
- Mixing due to false alarms not possible
- Optionally available with replaceable wear lining
- Replaceable flap
- Ample maintenance openings
- Modular system with choice of transition pieces (e.g. ceiling/hinged pipe box)
- Choice of drive type (electric, pneumatic, manual)
- Explosion protection as per ATEX directive



FIND OUT MORE



### THE FLEXIBLE HINGED BOX FROM ZUTHER

This standardised modular system offers extensive flexibility. Through the use of different transitions, the hinged box can be used as a ceiling or hinged pipe box. The design can also be changed at a later date by replacing modules. Two hinged boxes can also be screwed together without any great loss of height. Depending on its use, the entire hinged box can be optionally fitted with a wear lining. Whether fitted or not, the flap can be easily replaced.



# SLIDERS

## OUTLET SLIDER FOR TROUGH CHAIN CONVEYORS – TYPE SRS OUTLET SLIDER FOR SILOS – TYPE SRS



FIND OUT MORE

- Robust and reliable design
- Various versions available
- Choice of drive type (electric, pneumatic, manual)
- Three slider families (longitudinal, transverse and silo sliders)
- Explosion protection as per ATEX directive
- High reliability



### SLIDERS FOR TROUGH CHAIN CONVEYORS

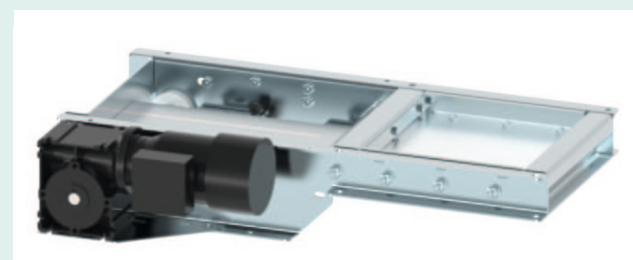


Electrically controlled outlet slider including end position switching.  
Transverse extension, as a floor-level variant

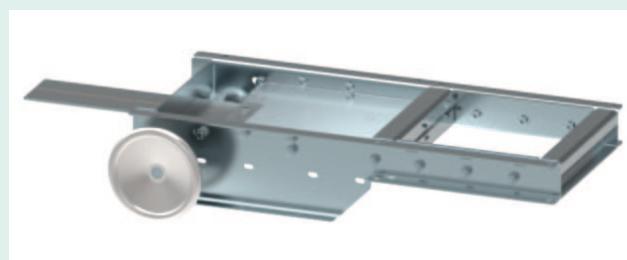


Pneumatically controlled outlet slider including end position switching.  
Longitudinal extension

### SLIDERS FOR SILOS



Electrically controlled outlet slider including end position switching.  
Available from NW 200 mm - 500 mm



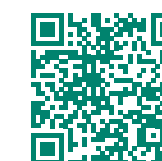
Manual outlet slider including end position switching.  
Suitable as an emergency slider (with rod assembly)

### SLIDER SYSTEMS FROM ZUTHER

Sliders are an important part of a flexible conveyor system because – in conjunction with other components – they enable precise control of the product flow to the required target. Without reliable slider components, the full potential of the system cannot be exploited.

For increased performance and a longer service life, all three slider families (transverse, longitudinal and silo sliders) from ZUTHER have been reworked extensively using the empirical values collected.

# LOADING BELLOW



FIND OUT MORE

- Telescopic
- Aspiration connection
- Extended total length up to maximum 6 metres
- Stroke of up to maximum 4 metres
- Low space requirement
- Low-wear design
- Can be used for various materials
- Optional fill level indicator
- Electric and manual drive available
- Can be used for tankers and dumpers
- ATEX conformity
- Low dust generation



### LOADING SETS FROM ZUTHER

Wherever various bulk materials are loaded, a great deal of dust is generated. Our loading bellows offer not only the ability to load reliably, they also offer optional aspiration to reduce dust formation to a minimum.

Zuther loading bellows impress with their low space requirement and their large stroke of up to four metres, while when they are retracted, they have an installation dimension of one metre or more. Whether for loading dump trailers or tankers, both variants guarantee smooth operation.

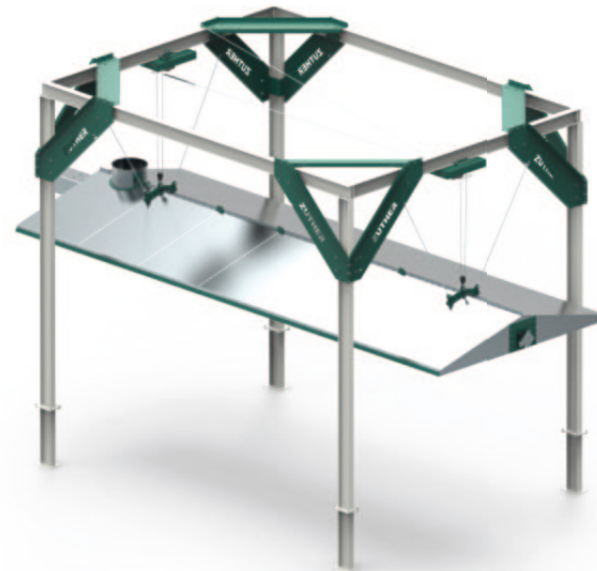


## DUST LOADING SYSTEM

- Optimum loading of dust, chaff and waste
- Fast electric raising and lowering
- Additional safety ropes
- Optimum use of volume thanks to distribution screw
- Integrated full indicators protect against overflow
- Reliable system tried and tested over the years



FIND OUT MORE



### SHIP LOADING SYSTEMS FROM ZUTHER

A lowerable dust bell with integrated distribution screw ensures virtually dust-free loading of the waste material. The dust bell is suspended from a robust steel frame and can be raised or lowered easily and quickly with its electric winches. The winches are conveniently operated using a pendant control located directly at the loading point. The integrated distribution screw ensures optimum volume utilisation of the container/trailer and the full indicator prevents overfilling. All components exposed to the weather are fully galvanised and weatherproof.

## EVEN AFTER INSTALLATION OF YOUR SYSTEM, WE WILL STILL BE THERE FOR YOU

### EMERGENCY SERVICE

You can always reach a contact person who will help you solve your problem, even outside our normal business hours. During the grain harvest, a 24-hour emergency service is set up to ensure problems are resolved immediately. Should it prove necessary, we can provide you with a service engineer at any time. Thanks to our location in the immediate vicinity of Hamburg Airport, a specialist can also soon be on site abroad.

### SPARE PARTS DELIVERY SERVICE

Even the best component has to be replaced at some point. To ensure that your system downtimes are as short as possible, we keep most required spare and wear parts in stock at our central warehouse. Selected logistics partners take care of transport, ensuring that you get your parts quickly and reliably, even if it means sending the part immediately by courier.

### MODIFYING YOUR SYSTEM AND ENHANCING ITS PERFORMANCE

If your company is expanding and your existing plant or system is stretched to its limits, we remain at your service with the expertise we have gained over almost 100 years, working out solutions to modify or enhance the performance of your system. We will still be your partner tomorrow.

## sFIX MAINTENANCE SOFTWARE SIMPLE & MANUFACTURER-INDEPENDENT

**SIMPLE, EFFICIENT AND RELIABLE. THE SIMPLE AND CLEAR WAY OF MAINTENANCE.**

sFIX digitises the maintenance and documentation of your plant or system. It gives you a simple, intuitive and precise overview of all maintenance activities and relevant documentation for your plant, system or machine.

You can use a QR code on the machine to obtain all essential information, such as maintenance records, spare parts lists, drawings and much more. By scanning the QR code, you can easily start the maintenance process and document the results directly. sFIX can also be used in existing systems little effort.



FIND OUT MORE



Scan the QR code on the machine

Access to machine data and documentation

Clear list of open maintenance work on the system

Document maintenance intuitively and easily

End maintenance and archive

Overview of all locations



## PLANNING, PRODUCTION, ASSEMBLY AND MAINTENANCE – ALL FROM A SINGLE SOURCE.

**With us, you always have a project manager who is responsible for your needs, your personal contact from the planning stage to making your project a reality.**

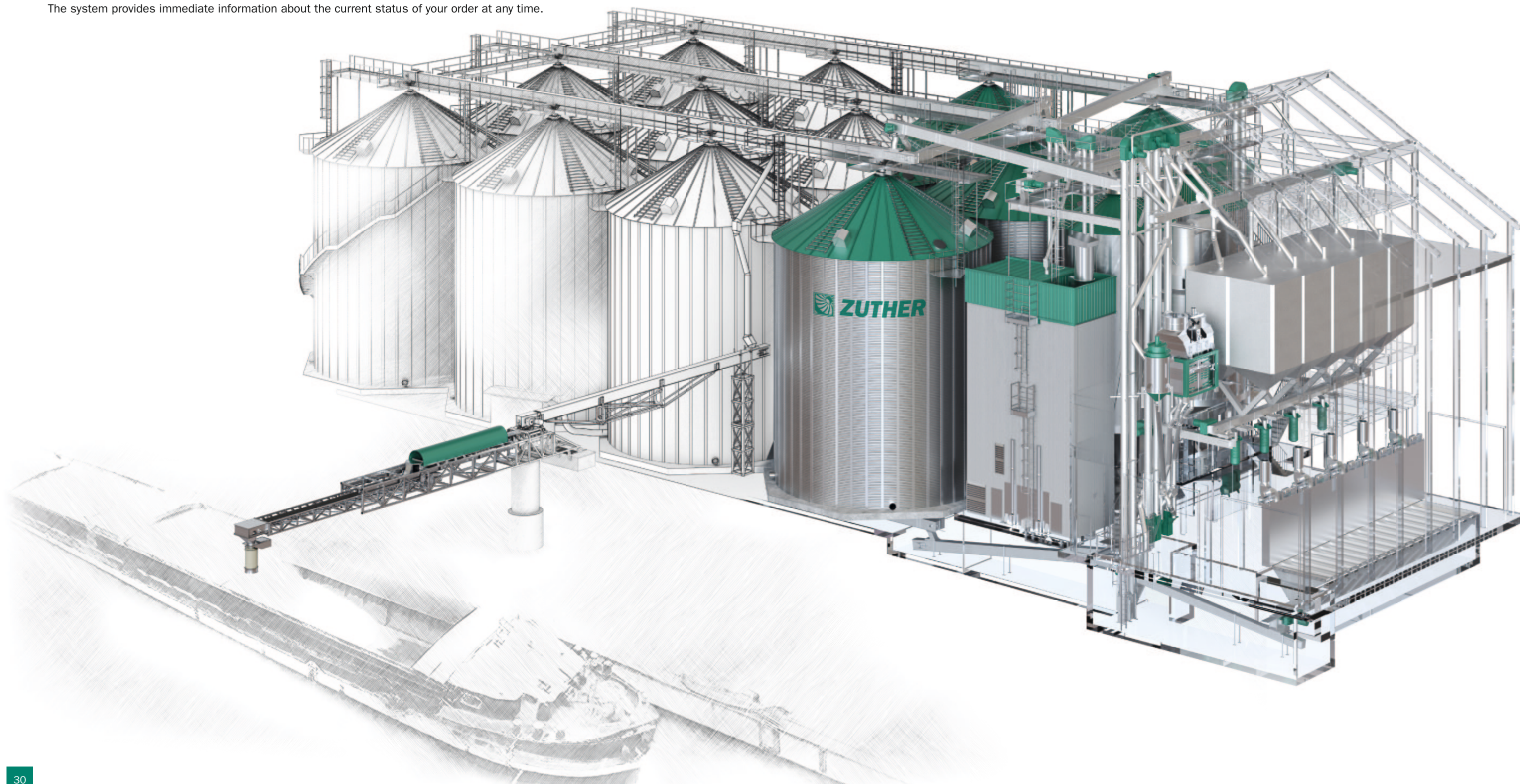
You get a system that is all of a piece. Our highly qualified employees do the planning on 3D CAD systems at state-of-the-art CAD workstations, allowing you to see in detail how your system is going to look even before cutting the first sod. 3D design prevents planning errors that cannot be immediately detected with complex 2D designs. A modern materials management system ensures that all parts required for your order go into production with the right properties, in the required quantities and at the right time.

The system provides immediate information about the current status of your order at any time.

## WE PUT GREAT VALUE ON RETURNING CUSTOM- ERS – NOT RETURNED PRODUCTS.

At the centre of our business is a particular focus on ensuring the quality of our products and services. We achieve this with our QM system, which is based on a large number of ongoing inspection plans that rather than being at the end of the process accompany it from design and production to assembly.

This ensures that errors are detected at an early stage of the process, avoiding the need for any expensive reworking. Our processes for selection and ongoing evaluation of our suppliers also helps to ensure high quality and virtually error-free production.







**ZUTHER GMBH**

An der Bundesstraße Nr. 8-9  
D-29481 Karwitz/Dannenberg

Phone +49(0) 5861 961-0

Fax +49(0) 5861 961-40

E-mail: [info@zuther-online.de](mailto:info@zuther-online.de)

Internet: [www.zuther-online.de](http://www.zuther-online.de)

