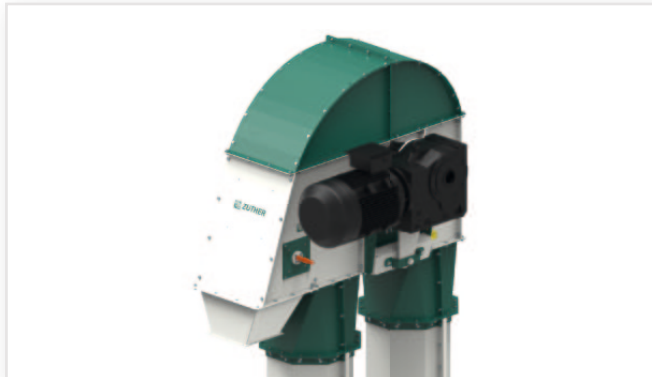


# BUCKET ELEVATORS

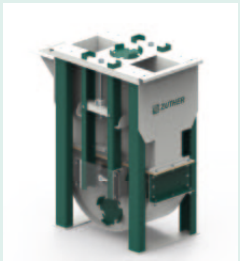
## TYPE E00-E10

- Capacity of up to 800 t/h\*
- Standardised modular system, suitable for various bulk materials
- High reliability due to sophisticated technical design
- High-performance bucket systems – elevator belt resistant to oil and grease
- Material: Galvanised, painted or made of stainless steel



FIND OUT MORE

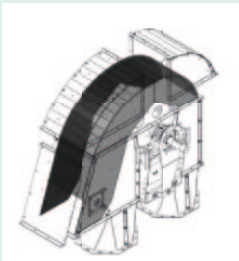
### OPTIONAL EQUIPMENT:



Telescopic elevator foot for improved residue clearance



Separate aspiration chamber for aspiration



Wear lining over entire discharge ramp



Modular elevator head platform for maintenance work

MANY OTHER EQUIPMENT OPTIONS AVAILABLE



### DESIGN

All elevators are equipped with high-quality drive components, elevator belts and elevator buckets. In combination with a solid sheet steel construction, they ensure high durability and thus protect your investment. Food-safe design possible.

Our bucket elevators are put through their paces every day around the world under the toughest conditions. They are easy and efficient to maintain thanks to a variety of maintenance flaps in the head, foot and elevator shaft.

### DESIGN ALSO IN ATEX DIRECTIVE

On request, we can equip our bucket elevators with misalignment monitoring, electronic speed monitoring, complete motor winding protection and full indicators. Pressure relief flaps at the head and at the shaft are available as an option. The shaft can also be equipped with a point filter.

### SELF-SUPPORTING CONSTRUCTION

You describe your problem to us and we will make you a detailed and technically sophisticated offer. Elevator shaft enables efficient maintenance.

### WE'RE HAPPY TO ADVISE YOU

The sophisticated technical design of our elevators gives them a high load capacity, allowing free-standing installation. Tall construction heights are also possible, with no need for expensive supporting tower structures. In addition to a strong price/performance ratio, we offer you high reliability for your process.

\*Approximate capacity in t/h at 0.75 t/m<sup>3</sup>

Destination/size	E00	E03	E05	E07	E08	E09	E10
Capacity in t/h	5 - 20	20 - 70	70 - 150	150 - 250	250 - 300	300 - 500	500 - 600
Elevatorfoot height	780	1.100	1.285	1.400	1.506	1.603	2.000
Elevatorfoot height left w.	500	750	985	1.145	1.310	1.430	1.600
Elevatorhead height	503	800	1.065	1.210	1.447	1.470	1.805
Elevatorhead width left w.	760	1.164	1.490	1.636	1.858	2.000	2.345
Inlet height left w. (asc side)	750	990	1.235	1.307	1.450	1.492	2.050
Inlet height left w. (desc side)	650	875	1.075	1.122	1.300	1.342	1.900
Center distance shaft to shaft	single shaft	530	705	805	920	980	1.080
Shaft panel thickness	2	2/3	2/3	2/3	2/3	2/3	2/3
Head panel thickness	3	3	4	5	5	5	6
Foot panel thickness	3	4	4	5	5	5	6

\*) Max. Conveying capacity at a bulk density of 0.75 t/m<sup>3</sup> heavy grain. All dimensions in mm.